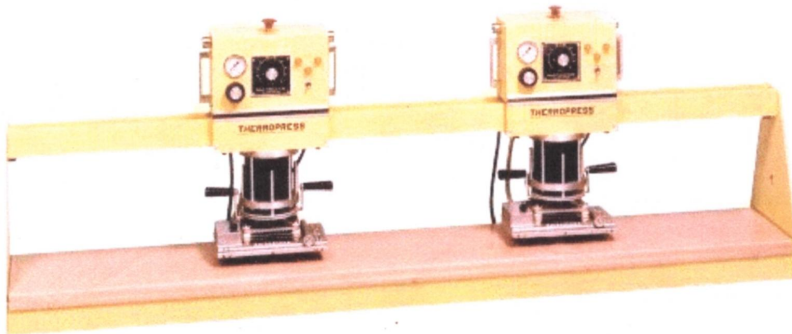


Thermopress HP7



Thermopress HP7

- Fully adjustable pressure to a maximum of 100 PSI.
- Timer- 0-45 Seconds, Solid State, adjustable
- Conveniently located adjustable thermostat to set desired temperature
- Cast tubular heating elements distribute heat evenly and quickly
- Iron rotates to match work area without moving work
- Rolling head allows clear work area for fast, accurate work layup
- Pilot light indicate power, air on, iron to operating temperature
- Dual operating switches require operator to activate switches simultaneously to cycle machine
- Anti Tie-down System eliminates single handed operation
- Emergency Release Switch immediately stops machine operation, until manually reset
- Limit Control Thermostat does not allow operation of machine until iron temperature reaches 375° F.

SPECIFICATIONS	
Electrical-	8 Amps at 120 Volts, 60 Hz.*
Dimensions-	Width- 72" 182.88 cm
	Depth- 12 1/2" 31.75 cm
	Height- 17 1/4" 43.82 cm- (Top of Support)
	Height- 25 3/4" 65.41 cm- (Top of Control Head)
*All units available in 220 Volt. 50 Hz.	

AVAILABLE MODELS	
HP7AS1-	6 ft. Stand- One Work Head- 6" x 10" Iron
HP7AS5-	6 ft. Stand- Two Work Heads- 6" x 10" Iron
HP7AS10-	6 ft. Stand- One Work Head- 12" x 24" Iron



WADER
Labelling Systems Ltd

Carham Road, Hoylake, Wirral, CH47 4FF, UK
Tel: +44 151 632 3013, Fax: +44 151 632 5151
info@wader.co.uk www.wader.co.uk

THERMOPRESS MODEL HP7 – NON DIGITAL

SPECIFICATIONS

HP7-01 + ONE HP7-02 -- 6 FOOT TRACK - SINGLE HEAD

HP7-01 + TWO HP7-02 -- 6 FOOT TRACK - DUAL HEADS

<u>OVERALL LENGTH</u>	72"	183 CM	
<u>OVERALL HEIGHT</u>	26"	66 CM	
<u>OVERALL WIDTH</u>	12-1/2"	32 CM	
<u>WEIGHT - SHIPPING</u>	321 LB.	146 KG	SINGLE HEAD MACHINE
(BOXED & SKIDDED)	358 LB.	162 KG	DUAL HEAD MACHINE

ELECTRICAL SUPPLY -- WIRING DIAGRAM ENCLOSED

- 120V / 60 CYCLE FOR USE IN THE UNITED STATES
- 240V / 50 CYCLE FOR USE IN EUROPE
- 7.5 AMPS ARE USED FOR EACH INDIVIDUAL HEAD WITH A STANDARD 6" X 10" IRON (15 cm x 25.4 cm)

AIR SUPPLY

- 65 PSI MINIMUM
- 125 PSI MAXIMUM
- CUBIC FEET OF AIR USED PER CYCLE IS NOT OF ANY CONSEQUENCE TO AFFECT YOUR AIR SUPPLY
- 80 PSI WILL PRODUCE APPROXIMATELY 16 POUNDS PER SQUARE INCH PRESSURE ON THE IRON
- 36.2 KG WILL PRODUCE APPROXIMATELY 1.12 KG/CM2

OPTIONS AVAILABLE

- DIGITAL LED READ OUT TEMPERATURE CONTROLLER
- 4" X 14" IRON (10.1 cm x 35.5 cm)
- 5" X 6" IRON (12.7 cm x 15.2 cm)
- 8" X 12" IRON (20.3 cm x 30.5 cm)
- OPEN END RAIL
- FILTER ASSEMBLY FOR AIR LINE

SETTING UP TO OPERATE

- ATTACH AIR HOSE TO MACHINE, THEN ATTACH TO YOUR AIR SUPPLY
- PLUG UNIT INTO SPECIFIED ELECTRICAL SUPPLY THAT IS GROUNDED
- TURN MACHINE ON WITH THE SUPPLY SWITCH
- TWO AMBER PILOT LIGHTS WILL COME ON
 - ONE INDICATES THAT THERE IS AIR SUPPLIED TO THE UNIT
 - ONE INDICATES THAT THERE IS ELECTRICAL POWER TO THE UNIT
- THE THIRD AMBER LIGHT MUST COME ON TO OPERATE THE UNIT
- THIS LIGHT WILL NOT COME ON UNTIL THE IRON IS TO TEMPERATURE
- THIS KEEPS THE OPERATOR FROM APPLYING ITEMS THAT WILL NOT ADHERE TO MATERIAL BECAUSE OF LACK OF HEAT
- THE IRON IS FITTED WITH A LIMIT CONTROL THERMOSTAT THAT DOES NOT ALLOW THE UNIT TO OPERATE UNTIL THE IRON REACHES 380° F (193° C)

TIMER

- SET TIMER TO THE NUMBER OF SECONDS DESIRED
- THE TIME IT TAKES TO HEAT SEAL TWO ITEMS TOGETHER DEPENDS ON MANY FACTORS
 - THE LOCATION OF THE MACHINE, AN OPEN WINDOW OR DOOR, A FAN BLOWING ON THE UNIT
 - HIGH HUMIDITY
 - THE ITEMS BEING SEALED
 - THICKNESS OR THICKNESS VARIATIONS

PRESSURE SETTING

- A RULE OF THUMB IS TO START WITH 80 PSI (36.2 KG)
- ADJUSTMENTS MAY BE REQUIRED TO MEET YOUR REQUIREMENTS

IRON TEMPERATURE SETTINGS

- WHEN ALL THREE PILOT LIGHTS ARE ON, MACHINE IS READY TO OPERATE
- THE IRON IS SET AT THE FACTORY TO OPERATE AT 410° F (210° C)
- THIS TEMPERATURE MAY BE ADJUSTED BY ROTATING THE BLACK KNOB ON TOP OR THE IRON ON THE LEFT SIDE
- TO RAISE THE TEMPERATURE TURN THE KNOB CLOCKWISE
- TO LOWER THE TEMPERATURE TURN THE KNOB COUNTER CLOCKWISE
- WARNING -- A VERY SMALL MOVEMENT EITHER WAY WILL CHANGE THE TEMPERATURE ABOUT 10° F (5.5° C)

TO HEAT SEAL

- ROLL HEAD TO ONE SIDE - USING THE HANDLES ON THE SIDES OF THE UPPER CONTROL BOX
- PLACE ITEM ON THE BASE OF THE UNIT
- PLACE ITEM TO BE APPLIED IN CORRECT LOCATION
- ROLL HEAD SO IRON IS SQUARELY OVER THE ITEM TO BE APPLIED
- WHILE HANDS ARE STILL ON THE HANDLES ON THE SIDE OF THE CONTROL BOX
 - PRESS THE BUTTONS DIRECTLY ABOVE HANDLES AT THE SAME TIME TO CYCLE THE UNIT
- THE MACHINE WILL AUTOMATICALLY OPEN WHEN TIMER CYCLE IS COMPLETE

RELEASE SWITCH

- THE RED KNOB IN THE CENTER TOP OF THE CONTROL BOX IS THE RELEASE SWITCH
- WHEN ACTIVATED IT AUTOMATICALLY OPENS THE MACHINE AND STOPS THE CYCLE
- ONCE ACTIVATED, ONLY TWO OF THE THREE PILOT LIGHTS WILL BE ON
- THE MACHINE WILL NOT OPERATE AGAIN UNTIL YOU RESET THE RELEASE SWITCH
- PUSH AGAIN ON THE RELEASE SWITCH
- WHEN ALL THREE PILOT LIGHTS ARE ON THE MACHINE MAY BE OPERATED

ANTI TIE DOWN DEVICE

- THE MACHINE IS FITTED WITH AN ANTI DOWN DEVICE
- THIS UNIT MAKES YOU PUSH BOTH OPERATING BUTTONS AT THE SAME TIME OR MACHINE WILL NOT OPERATE
- THIS UNIT MAKES THIS MACHINE A TWO HANDED OPERATION
- TAPING DOWN ONE OPERATING BUTTON, WILL NOT ALLOW THE MACHINE TO OPERATE

REPLACEMENT PARTS

- THE MANUFACTURER STOCKS ALL PARTS FOR THERMOPRESS UNITS, AND ARE AVAILABLE FROM YOUR DISTRIBUTOR

WARRANTY

- ONE (1) YEAR FROM DATE OF SHIPMENT
- FOR ALL PARTS -- UP TO \$750.00 IN VALUE
 - NOT INCLUDING TEFLON FIBERGLAS IRON COVER
 - NOT INCLUDING TEFLON FIBERGLAS PAD COVER
 - NOT INCLUDING SILICONE SPONGE PADS
 - NOT INCLUDING ABUSIVE OPERATION
- A MAJOR PROBLEM IS OPEN FOR DISCUSSION AND EVALUATION
- LABOR CAN ONLY BE COVERED IF MACHINE IS RETURNED TO EUCLID PRODUCTS COMPANY INC.
- SEE ATTACHED FOR COPY OF WARRANTY

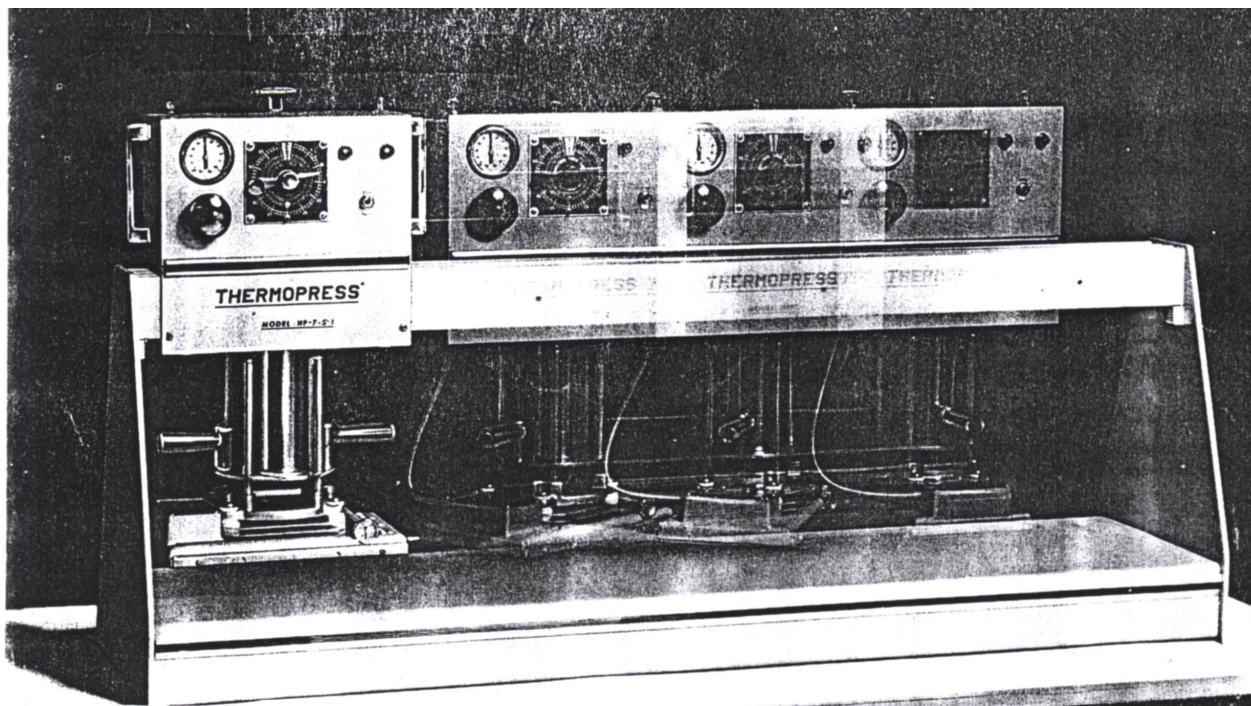
THESE INSTRUCTIONS MAY BE USE FOR THE FOLLOWING MACHINES
ANY THERMOPRESS MODEL WHICH BEGINS WITH -- HP7

THESE INSTRUCTIONS DO NOT APPLY TO ANY THERMOPRESS MODEL HP7, WHICH HAVE DIGITAL TEMPERATURE CONTROLLERS, DIGITAL TIMER OR DIGITAL PRESSURE GAUGE

SAFE OPERATION OF THIS MACHINE IS THE CUSTOMERS RESPONSIBILITY, COMMON SENSE DICTATES SAFE OPERATION ON THIS MACHINE JUST AS IT DOES ON ANY MACHINE. EUCLID PRODUCTS COMPANY IS NOT RESPONSIBLE FOR CARELESS OPERATION, OR MACHINES THAT ARE NOT KEPT IN THE ORIGINAL SAFE OPERATING CONDITION, WHICH MAY RESULT IN AN INJURY.

THE WARNINGS, CAUTIONS AND INSTRUCTIONS DISCUSSED HEREIN, CANNOT COVER ALL POSSIBLE CONDITIONS AND SITUATIONS THAT MAY OCCUR.

IT MUST BE UNDERSTOOD BY THE OPERATOR THAT COMMON SENSE AND CAUTION ARE FACTORS WHICH CANNOT BE BUILT INTO THIS PRODUCT, BUT MUST BE SUPPLIED BY THE OPERATOR.



THERMOPRESS® MODEL HP-7-S-1, AS-1, AS-5

The most advanced heat seal mending machine on the market

ASSEMBLY & OPERATING INSTRUCTIONS

(Apply only to serial no. 400 or higher)

SPECIFICATIONS

Electrical Requirement: 7.5 amperes @ 110-115 VAC
 Air Requirement: Minimum 75 psi.
 Consumption: 0.100 CFM @ 5 sec. cycle;
 Increase in dwell and/or time cycle reduces
 consumption in inverse proportion

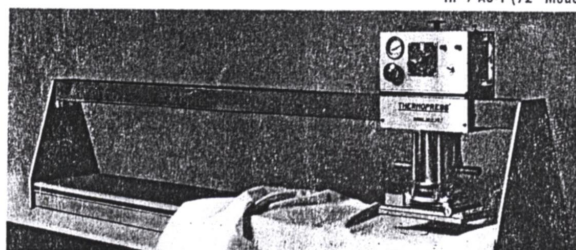
Shipping Weight: HP-7-S-1 (48" Model): 170 lbs.
 HP-7-AS-1 (72" Model): 295 lbs.

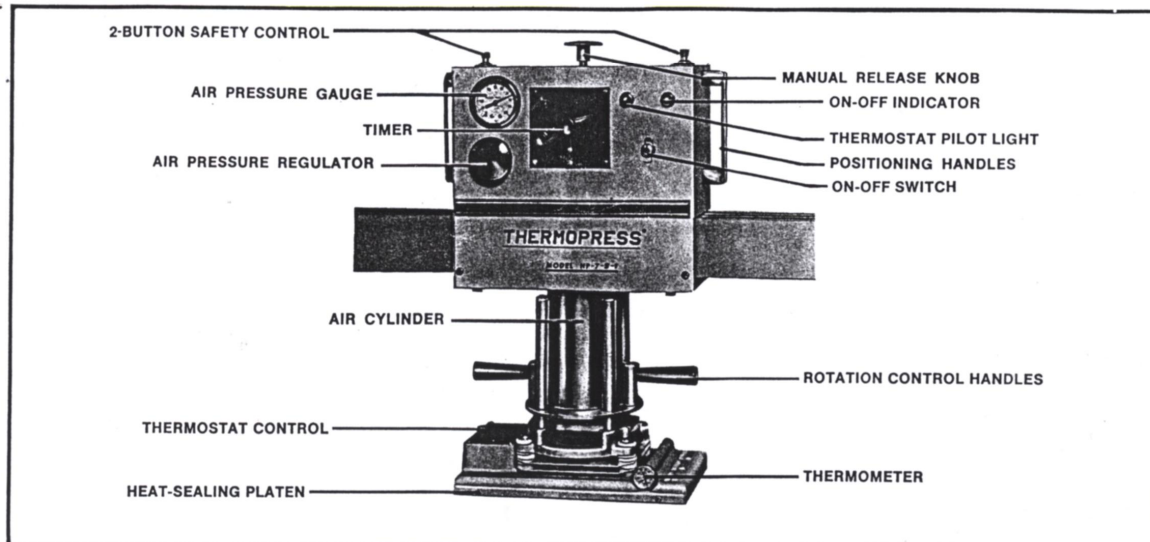
Dimensions: HP-7-S-1 (48" Model): 18" x 48" x 13"
 HP-7-AS-1 (72" Model): 18" x 72" x 13"

Optional: Air Filter Assembly (Part #7-1-F)
 Extra Complete Control Head Assembly

Specifications on wider-base machines and other accessory equipment
 are available on request

HP-7-AS-1 (72" Model)





FEATURES:

- Rugged, simple construction assures unlimited productive life; a tough heavy-duty machine to meet the most demanding production needs.
- Fully automatic pressure, heat and time controls—all fully adjustable.
- Two-button safety control sets automatic cycle into motion.
- Heat is generated by cast-in tubular heaters of unlimited life in custom crafted high density aluminum platen. Dual thermostatic control—one thermostat sets operating temperature; second thermostat provides fail-safe control to prevent machine operation at below optimum temperature; pilot light glows when machine is ready for operation.
- Heated platen covered with quickly replaceable Teflon fiberglass shields. Entire bed padded with silicone sponge rubber covered with Teflon fiberglass. Standard platen size is 6" x 10". Other sizes available on request.
- Unskilled workers quickly learn to do a perfect job every time.

ASSEMBLY INSTRUCTIONS - THERMOPRESS MODEL HP-7,
MODELS HP-7-S-10, HP-7-AS-10

A. SHIPPING CONTAINER:

1. Figure 1 identifies all individual assemblies contained within the master shipping carton.
2. Packed within the base and track assembly will be found two smaller cartons. Carton 1, the larger, contains:
 - a. Control box assembly.
 - b. Flexible air line hose.

Carton 2, the smaller, contains:

- a. Air cylinder-heating iron assembly.
- b. Two copper air line tube assemblies.

B. TOOLS REQUIRED:

1. A small adjustable wrench and a screwdriver are all that is required.

C. BASE AND TRACK ASSEMBLY:

1. Carefully remove the base and track assembly from the carton and place it on the prepared work table. For the purposes of assembly, it is completely reversible in terms of front and rear.

D. CONTROL BOX ASSEMBLY:

1. Remove the wood shipping block from the base of the control box by unscrewing the six hex-head cap screws. SAVE THESE SCREWS.
2. Referring to Figure 2, place the control box on the track assembly with timer, gauge, and other controls facing the assembler. Make certain that the flanges of the nylon track wheel bearings are positioned correctly by gently rocking the control box forward and back once. Move the control box the full length of the track to insure that it rides smoothly over the full length.

E. AIR CYLINDER-HEATING IRON ASSEMBLY:

1. Lay out all those items included within the remaining carton 2.
2. Referring to Figure 3, fasten the air cylinder heating iron assembly to the underneath side of the control box assembly. Simply line up the six threaded holes and insert the six hex-head cap screws previously removed from the control box assembly. Elevate the air cylinder-heating iron assembly approximately 2" to the appropriate holes and tighten all screws securely.

F. HEATING IRON ELECTRICAL CIRCUIT:

1. On the rear of the control box assembly, remove the small square terminal box cover by unfastening two machine screws.
2. Referring to Figure 4, fasten the three wire terminal strip from the heating iron leads to the three contact studs provided. The yellow heating iron wire connects with the green contact stud wire at position number 13, the extreme right. The white iron wire lead connects to the white contact stud wire at position number 12. The black iron wire lead connects to the blue stud wire at terminal number 11, the extreme left. See Figure 5 and wiring diagram, Page 7.
3. Referring to Figure 6, insert heating iron cord guard support into slot provided in the terminal box cover and re-install cover on control box.

G. AIR LINE TUBE AND HOSE ASSEMBLY:

1. Referring to Figure 7, connect each of the brass air fittings on the control box with those fittings located on the support plate of the air cylinder heating iron assembly using the two copper air line tube assemblies provided.
2. CAUTION! Make certain that all four ends of the air line tube assemblies seat properly in the fittings and that they are securely fastened by the coupling nuts. Tighten securely but do not use excessive force that may result in thread damage that could conceivably cause air leakage.
3. Referring to Figure 8, connect the air hose provided to the control box air fitting and tighten.

Fig. 1

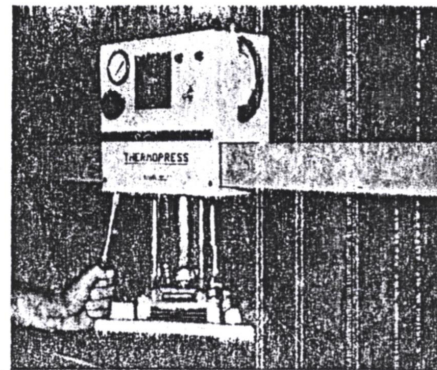
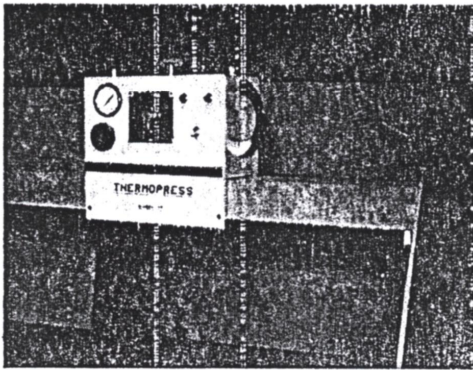
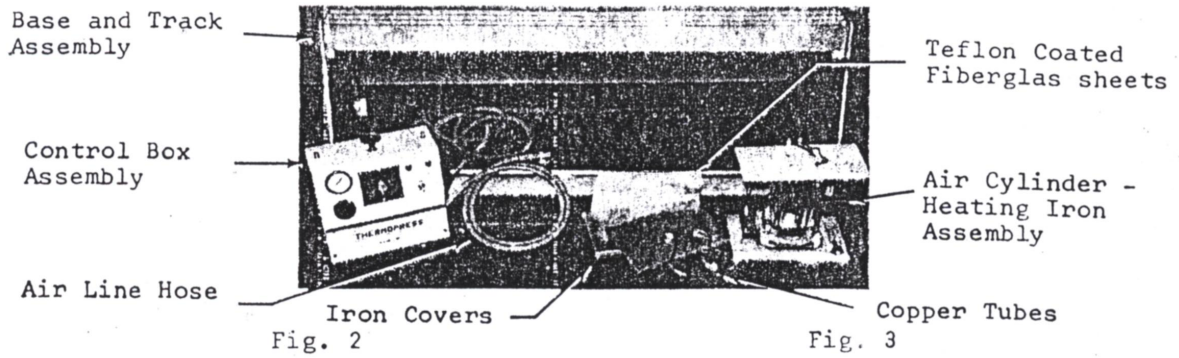


Fig. 4

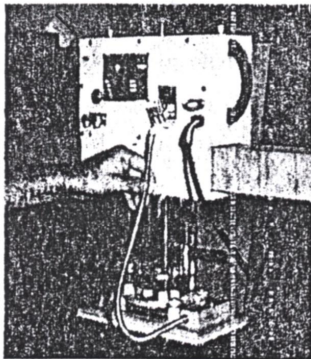


Fig. 5

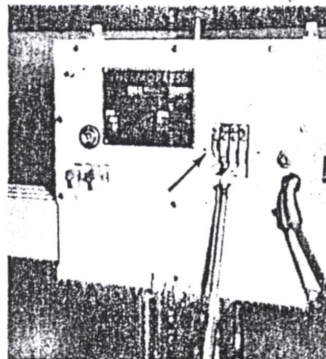


Fig. 6

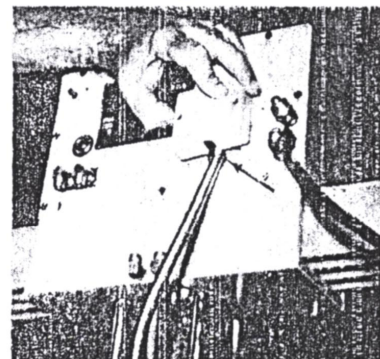


Fig. 7

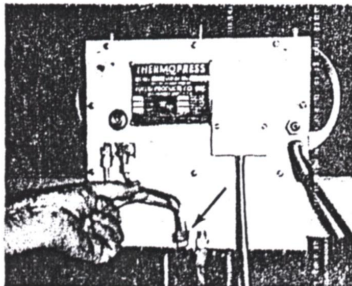


Fig. 8

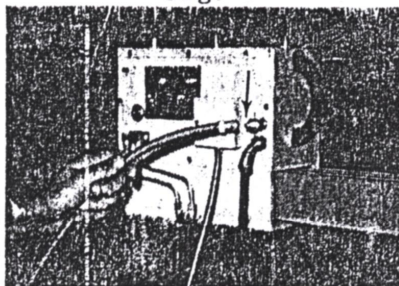
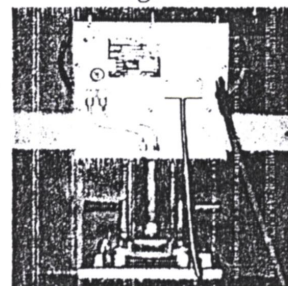


Fig. 9



SPECIFICATIONS AND OPERATING INSTRUCTIONS - THERMOPRESS
MODELS HP-7-S-10, HP-7-AS-10

DESCRIPTION - The HP-7 Series THERMOPRESS is a fully automatic, air-operated heat seal machine, designed for table mounting. Its outside dimensions are: Height 18", Width 13", Length 48" or 72", depending upon model.

AIR SUPPLY - Connect air hose furnished with machine to brass fitting protruding from rear of control box. Connect 1/4" NPT male fitting of hose to a source of clean, dry air under a minimum pressure of 65 pounds per square inch. Air pressure should not exceed 100 psi.

The HP-7 Series Thermopress utilizes this air pressure for both raising and lowering the heating platen and for the application of the high mechanical pressures required to properly fuse Mending and Identification materials to varying fabrics.

To validate warranty and insure the supply of clean air carrying a trace of oil for the lubrication of cylinder and solenoid valve, a standard filter and lubricator unit should be installed in the air line.

Route air supply line to the Thermopress in such fashion that condensate from the main air line feeds directly into the filter unit.

ELECTRICAL REQUIREMENT - Current is supplied to the machine through the supply cord which can be plugged into any convenient source of 220 VAC single phase 60 cycle current. **WARNING! THE THERMOPRESS MUST BE GROUNDED BEFORE USING.**

HEATING PLATEN - Heat is generated by special 800 watt heaters cast into the aluminum iron. The platen temperature is regulated by a sensitive thermostat, which is factory preset at 410° F., but may readily be adjusted to suit.

CONTROL SWITCH - INDICATOR LIGHTS - The master on/off control is through a spst toggle switch located at the right-hand side of the control box. Two indicator lights are positioned above and to either side of the toggle switch. The upper right indicator glows when switch is activated, indicating that power is being fed to the iron. The second light is controlled by a secondary thermostat within the iron, which also prevents operation of the Thermopress at temperatures below 395°. Normally, complete warmup will require approximately 20 minutes.

WARNING! The use of both hands for activating the Thermopress is a safety feature. Taping down one of the two buttons used to activate the Thermopress is dangerous and could lead to serious injury.

Temperature Adjustment - Thermostat contact wear and oxidation may make an occasional adjustment necessary to maintain proper operating temperature. This may readily be effected by turning the black adjustment knob; clockwise to increase temperature and counterclockwise to reduce it. Very little movement of the knob is normally required to substantially effect the heat setting. It is recommended that platen temperature be allowed to stabilize for 2 to 5 minutes before a new temperature reading is taken.

PLATEN PRESSURE REGULATOR - Pressure to the platen is regulated by means of the knurled knob on the front left side of the control box. Turning clockwise increases the pressure, counterclockwise decreases the pressure. When decreasing the pressure, it is necessary to operate the machine once to reduce residual pressure within the system. Air pressure is indicated on pressure gauge mounted directly above knurled knob. This gauge reads in pounds per square inch air line pressure supplied to the 3" diameter air cylinder which activates the platen. The gauge should read between 60 to 65 pounds at all times.

TIMER - The length of time the platen is depressed is governed by the adjustable timer mounted in the middle of the front control panel. It has been factory set at 15 seconds. When it becomes necessary to change this setting, move nickel plate indicating arrow to desired setting. The small red pointer will follow the setting of the longer arrow type pointer. When the machine is closed by actuating the two contact buttons, the timer will start, causing the red pointer to travel toward zero setting. This pointer will indicate to the operator the remaining length of time for completion of cycle.

MANUAL RELEASE KNOB - The knob is located at the top center of the control panel. It is used to open the Thermopress any time prior to the end of the preset time cycle. The timer automatically resets itself.

PLATEN POSITIONING - ANGLE ADJUSTMENT - The integral heating platen, air cylinder and control box move on the upper support track across the entire width of the Thermopress. Grasp the handles on either side of the control box, push gently, and the entire carriage will slide easily on its nylon roller bearings.

The heating platen can also be turned 90° in either direction from its straightforward position to facilitate the sealing of large and oddly-shaped pieces.

OPERATING SUMMARY -

1. Turn toggle switch on.
2. Check for glow on indicator light to the upper right of the switch.
3. Wait approximately 20 minutes for second indicator light to glow.
4. Wait an additional 2 minutes for temperature to stabilize.
5. Position heating platen and make any necessary angle adjustments.
6. Operate Thermopress using two buttons located on top of control box simultaneously.



THERMOPRESS MODEL HP7 PARTS LIST

PART #	DESCRIPTION
703-1	REGULATOR ONLY -- ARROW (new-style)
703X	REGULATOR ONLY -- CASH ACME (old-style)
704	CONTROL BOX ONLY -- WITHOUT CONTENTS
706	IRON MOUNT ASSY -- CYLINDER - 4" DIA
707	GUIDE RING ASSY -- CYLINDER - 4" DIA
708	SWIVEL RING ASSY -- CYLINDER - 4" DIA
709	RELAY -- SINGLE - FOR 6 PIN SS TIMER
710610	IRON ASSY -- 6" X 10"
710610WR	WIRE KIT -- IRON - 6" X 10"
711	RELAY -- DUAL - FOR 5 PIN OR MECHANICAL TIMER
712	CARRIAGE ASSY
712-1	CARRIAGE ASSY -- FRONT PLATE
712-2	CARRIAGE ASSY -- REAR PLATE
712-3	CARRIAGE ASSY -- THRUST PLATE
712-4	CARRIAGE ASSY -- ROLLER SHAFT - ONE (of 2 per head)
712-5	CARRIAGE ASSY -- ROLLER WITH BEARING - ONE (of 2 per head)
713	STAND ASSY
717	PRESSURE GAUGE ASSY -- DIAL TYPE
718-1218	SPONGE PAD ASSY -- 12" X 18" - SPECIAL
718-1224	SPONGE PAD ASSY -- 12" X 24" - ONE (of 3 segments in bed of HP7)
718-1236	SPONGE PAD ASSY -- 12" X 36" - SPECIAL
718-610	SPONGE PAD ASSY -- 6" X 10" - FOR IRON
719	RELEASE SWITCH ASSY
719SW	RELEASE SWITCH ONLY
721	SAFETY GUARD
725	PILOT LIGHT -- ONE (of 3)
726	HEAT SHIELD ASSY
727	SUPPLY CORD ASSY



WADER
Labelling Systems Ltd

THERMOPRESS MODEL HP7 PARTS LIST

PART #	DESCRIPTION
728	SUPPLY SWITCH ASSY
730	TERMINAL STRIP ASSY -- FOR SS TIMER
732	TIMER ASSY -- 5 PIN - MECHANICAL - 45 SECONDS
738	AIR HOSE ASSY
739	VALVE ASSY -- BELLOWS
741	KNOB -- REGULATOR - OLD STYLE
750	ANTI-TIE DOWN ASSY - ATD6
750-5	SWITCH GUARD -- CUP AROUND OPERATING SWITCH
750CR	CAPACITOR / RESISTOR ASSY.
750R	RELAY ASSY -- ATD6
750SW	OPERATING SWITCH -- ATD6 - S/N 400+
752	TIMER ASSY -- 6 PIN - SOLID STATE - 45 SECONDS
753	TIMER ASSY -- 6 PIN - SOLID STATE - 45 MINUTES
765-4	TFG PAD COVER -- 4 FT.
765-6	TFG PAD COVER -- 6 FT.
765-8	TFG PAD COVER -- 8 FT.
766-414	TFG IRON COVER -- 4" X 14"
766-610	TFG IRON COVER -- 6" X 10"
770	OPERATING SWITCH ASSY -- TOP MOUNT - MOMENTARY
774	PRESSURE SWITCH ASSY
789	IRON MOUNT ASSY -- CYLINDER - 3" DIA
790	RETURN ASSY -- CYLINDER - 3" DIA
791	GUIDE PIN ASSY -- CYLINDER - 3" DIA
792	SPRING COVER ASSY -- CYLINDER - 3" DIA
793	SPRING ONLY -- CYLINDER - 3" DIA
799	IRON GUARD -- FOR 6" X 10" IRON
7CY3A	CYLINDER ASSY -- 3" DIA ***DISCONTINUED***
7CY3-RK	REPAIR KIT -- CYLINDER - 3" DIA



WADER
Labelling Systems Ltd

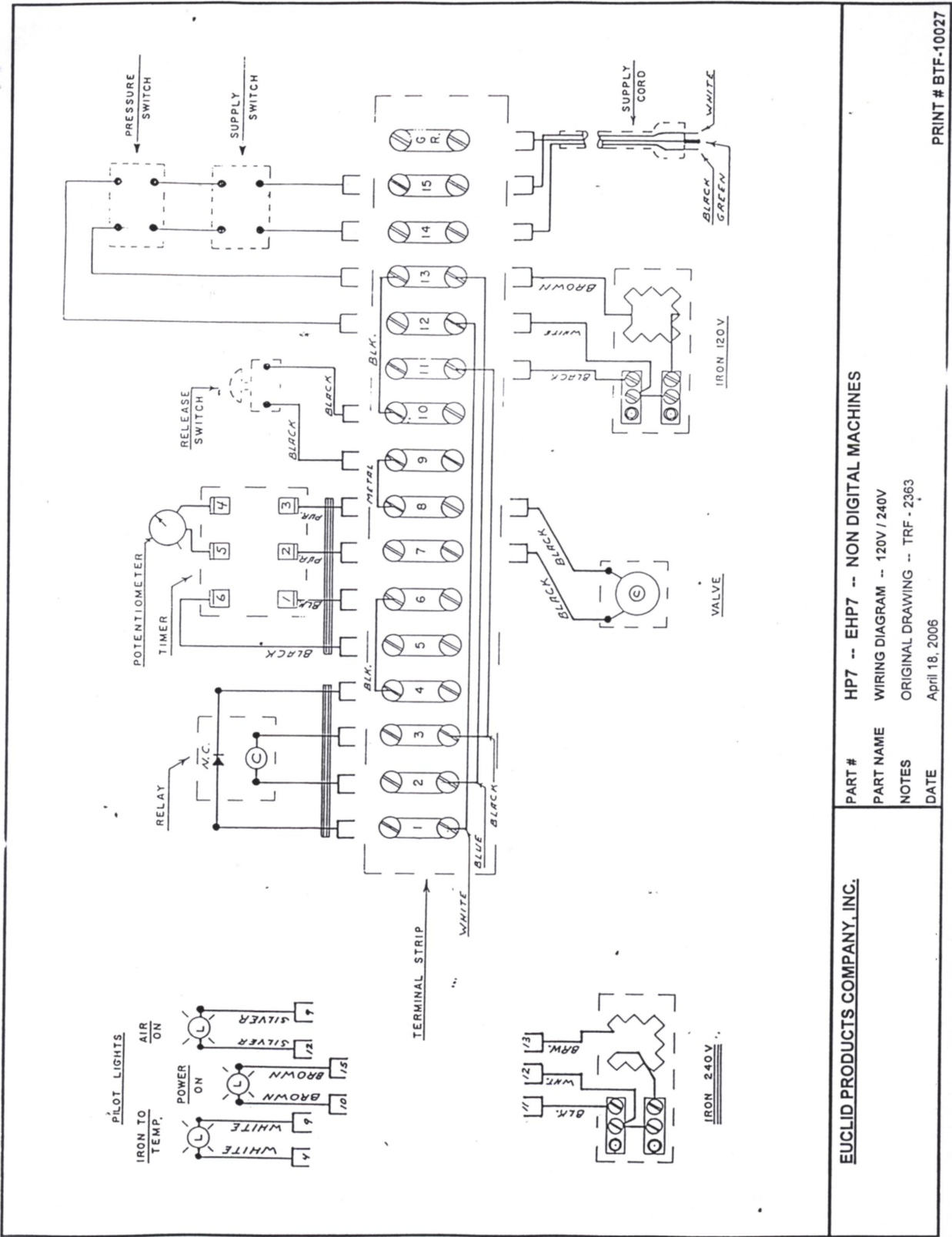
THERMOPRESS MODEL HP7 PARTS LIST

PART #	DESCRIPTION
7CY4	CYLINDER ASSY -- 4" DIA
7CY4-3	PISTON ONLY -- CYLINDER - 4" DIA
7CY45	CYLINDER TUBE -- CYLINDER - 4" DIA
7CY4-RK	REPAIR KIT -- CYLINDER - 4" DIA
ET10	TIMER -- 6 PIN - 45 SEC
ET11	TIMER -- 5 PIN - 45 SEC
K10	KNOB -- TIMER - SKIRTED POINTER - BLACK
K12	KNOB -- RELEASE SWITCH - REAMED - RED
K12-X	KNOB -- RELEASE SWITCH - DRILLED TO OLD-STYLE - RED
K13	KNOB -- THERMOSTAT - WITH POINTER - BLACK
K14	KNOB - SWIVEL - BLACK
K22	KNOB -- ATD6 SWITCHES - SNAP ON - RED
M-24	BUMPER -- RUBBER - CARRIAGE STOP
MSW10	MICRO SWITCH ONLY -- ATD6 OPERATING SWITCH
MSW12	MICRO SWITCH ONLY -- PRESSURE SWITCH
MSW15	MICRO SWITCH ONLY -- MECHANICAL TIMER
NP13	THERMOSTAT BOX COVER -- FOR 6" X 10" & 4" X 14" IRONS
PT2	POTENTIOMETER -- STEEL STEM
SP36	SPRING -- CORD GUARD - 17" - WITH EYELETS
SSP-10-10	SPONGE -- FULL SHEET - 1/2" X 36" X 36"
SSP-10-11	SPONGE -- HALF SHEET - 1/2" X 18" X 36"
SSP-10-12	SPONGE -- QUARTER SHEET - 1/2" X 9" X 36"
SSP-10-13	SPONGE -- QUARTER SHEET - 1/2" X 18" X 18"
SSP-10-14	SPONGE -- 1/2" X 4" X 36"
SSP-30-10	SPONGE -- FULL SHEET - 1/8" X 36" X 36"
SSP-40-10	SPONGE -- FULL SHEET - 3/16" X 36" X 36"
SSP-50-10	SPONGE -- FULL SHEET - 3/8" X 36" X 36"
SSP-91	SPONGE -- ADHESIVE - 2.8 OZ



THERMOPRESS MODEL HP7 PARTS LIST

PART #	DESCRIPTION
SSP-92	SPONGE -- ADHESIVE - 10.3 OZ
SW10	SWITCH ONLY -- TOGGLE -DPST - SCREW TERM.
SW13	SWITCH ONLY -- LIGHTED ROCKER
SW16	SWITCH ONLY -- OPERATING - ATD4
SW17	SWITCH ONLY -- PUSH/PUSH
SW18	SWITCH ONLY -- OPERATING - MOMENTARY
SW19	SWITCH ONLY -- MOMENTARY - OLD STYLE
TFG	TEFLON FIBERGLAS FABRIC & TAPE
TM1	THERMOMETER -- °F
TM3	THERMOMETER -- SURFACE MOUNT
TM4	THERMOMETER -- EXTENSION - SHORT - 3/4"
TM5	THERMOMETER -- EXTENSION - LONG - 1-3/16"
TS12	THERMOSTAT -- TEMPERATURE CONTROL (longer stem)
TS13	THERMOSTAT -- LIMIT CONTROL (shorter stem)
TS17	THERMOSTAT -- STEM EXTENSION - 1-1/2"
TS18	THERMOSTAT -- STEM EXTENSION - 2-1/8"
V-10-RK	VALVE REPAIR KIT -- BELLOWS
V-11	VALVE -- COIL ONLY - BELLOWS
W-40	WASHER -- FIBERGLAS
WR30	WIRE -- TEFLON - PER FOOT -



EUCLID PRODUCTS COMPANY, INC.

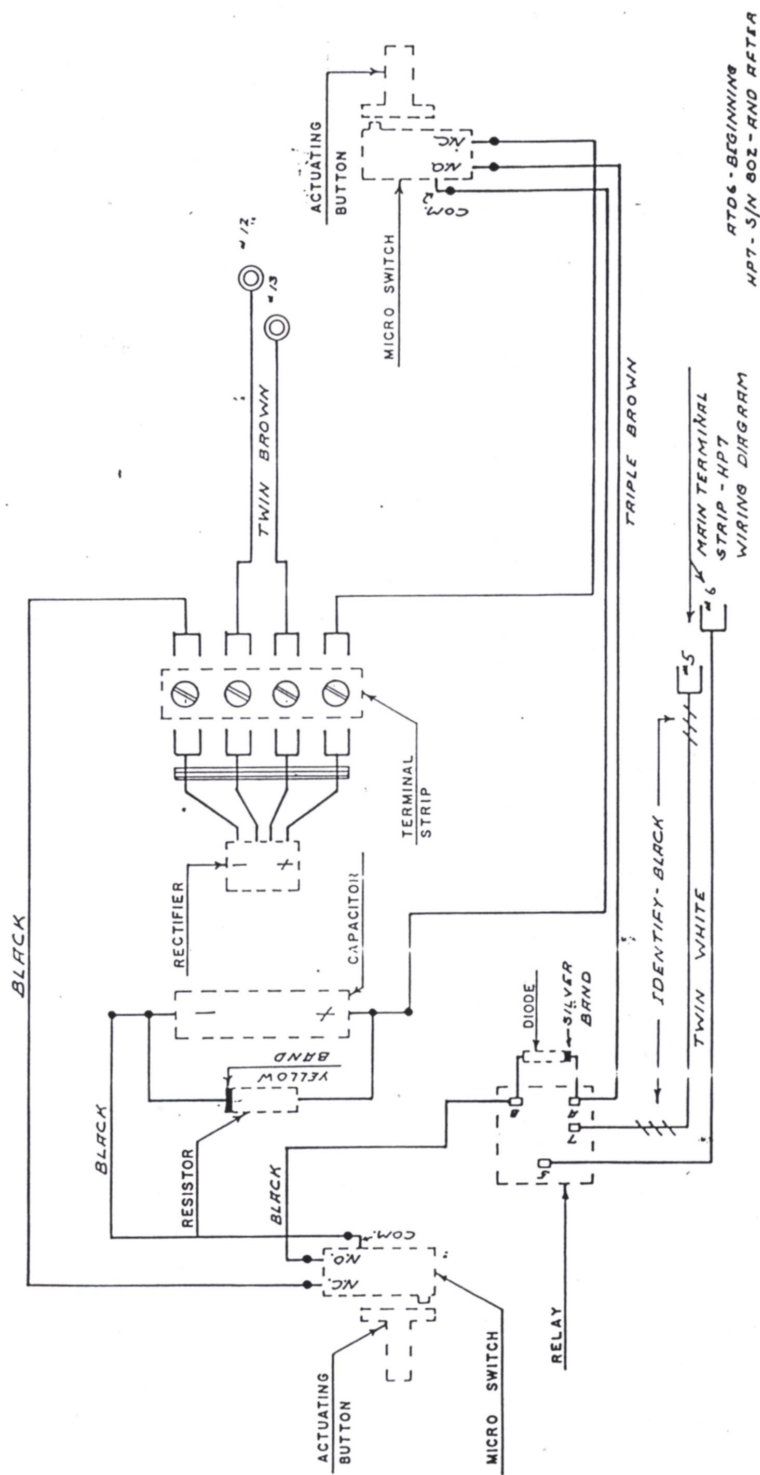
PART # HP7 -- EHP7 -- NON DIGITAL MACHINES

PART NAME WIRING DIAGRAM -- 120V / 240V

NOTES ORIGINAL DRAWING -- TRF - 2363

DATE April 18, 2006

PRINT # BTF-10027



PRINT # BTF-10028